

JALECO SAS ESD JIJI434

S3 CI SRC
EN ISO 20345:2011
35 to 48



J-INDUSTRY 4.0



- Recycled Putek® PLUS upper
- PU/PU sole Biomass Balance de BASF®
- ESD / Dissipative
- Polymer toe cap type B and midsole no metallic



- Urban sport-style safety shoe incorporating **MAXI-Soft Duo™** anti-fatigue technology designed for work stations that require standing for long periods (Upright or sustained activity).
- Safety shoe protecting the electronic devices against electrostatic discharge phenomena. Electrostatic dissipative shoes ESD Environmental Class II tested according to **EN 61340-4-3** and **EN 61340-5-1**.
- Recycled Putek® PLUS** upper (68% recycled polyester), waterproof and breathable. Anti abrasion insert. Black color. Fluorescent markings on the back of the heel.
- Upper lined in breathable **3D Surf** mesh with honeycomb structure to improve the peripheral ventilation of the foot, dries out rapidly.
- Padded tongue for good instep protection, combined with two side bellows to prevent any dirt from getting into the boots.
- Padded ergonomic collar in compact flexible foam, lined for extra comfort and better ankle and Achilles tendon protection.
- Lace up on five pairs of no metallic eyelets. Black laces 120 cm.
- Perforated insole for enhanced comfort : **MAXI-Soft Duo™ Green** composed of a **soft Biomass Balance BASF® Dynamic PU** midsole with heat sensitive memory foam and a maximum size **Biomass Balance Elastopan insert** that improves weight distribution by reducing pressure points and absorbs and relieves body stress associated with a prolonged standing working position and when walking. Anatomical, breathable and fitted with the **Link ESD™ system**, an innovative multi-contact, static electricity dissipater. (Patent pending).
- Ergonomic shoe, with broad synthetic polymer toe cap **Springtane-B™**. Impact resistance to 200 Joules. Minimum height after test $\geq 4\text{mm}$ in relation to the Type A toe cap in accordance with Standard 22568-2 : 2021.
- Stab-resistant structural insole and liner in **FleXtane™ By Jallatte ESD** (50% recycled polyester), in compliance with standard **22568-4 : 2021**, antistatic, **100% composite**. Sewn directly onto the upper and covering **100% of the foot for total protection**.
- Heel stiffener to reinforce the heel seat.
- BASF® PU / PU sole BMB | BioMass Balance Certifié EU-REDcert²** with an urban sport design, linear profile and excellent slip resistance. Extremely light and flexible support base.



Slip resistance tests results EN Standard :
EN ISO 20345 : 2011 **Requirement SRC**

SRA Test ground : ceramic / lubricant : water and detergent

On flat **0,62** (>0,32) – On the heel **0,48** (>0,28)

SRB Test ground steel/lubricant : glycerine

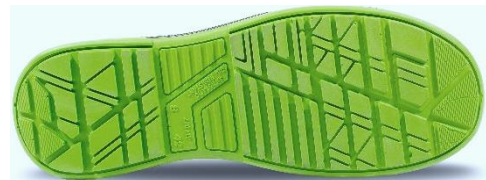
On flat **0,23** (>0,18) – On the heel **0,19** (>0,13)



BMB
EU-REDcert²

- 100% substitution of fossil resources with **renewable and sustainable** raw materials.
- Independently certified approach.
- Reduction of greenhouse gas emissions.
- Same properties and quality level as traditional safety shoes.

Weight	Gross weight (42) : 1316 g / Net weight (42) : 1100 g			
Size	35 to 39	40 to 42	43 to 45	46 to 48
Packaging	5 pairs	10 pairs		5 pairs
Box shoes (mm)	306 x 192 x 114		340 x 210 x 133	
Cartons (mm)	590 x 210 x 320	590 x 410 x 320	685 x 423 x 347	695 x 227 x 366



www.jallatte.com